

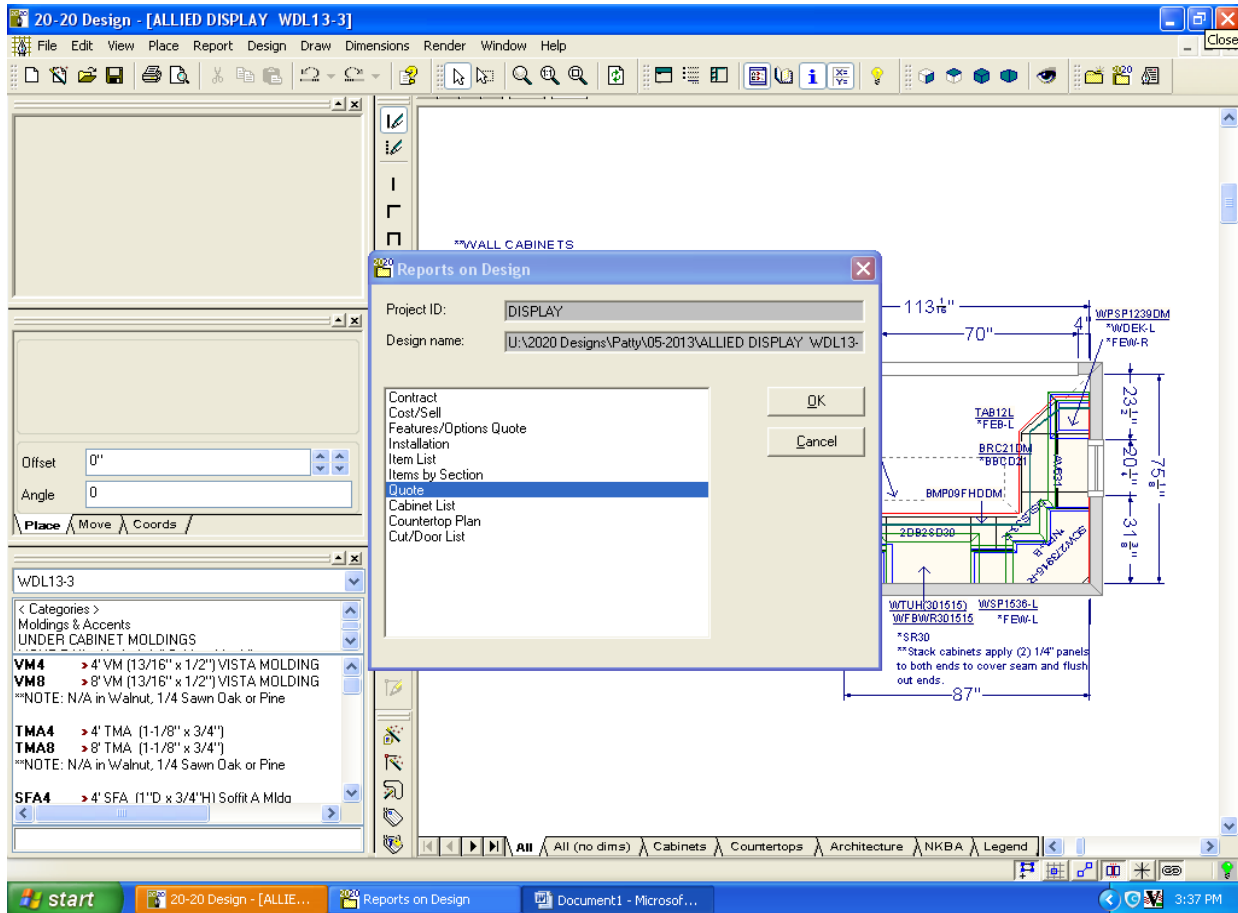
2415 SD Highway 10 | Sisseton, SD 57262  
 phone: 605.698.4300 | fax: 605.698.3034 | info@woodlandcabinetry.com

## How to Place Orders Using 20-20

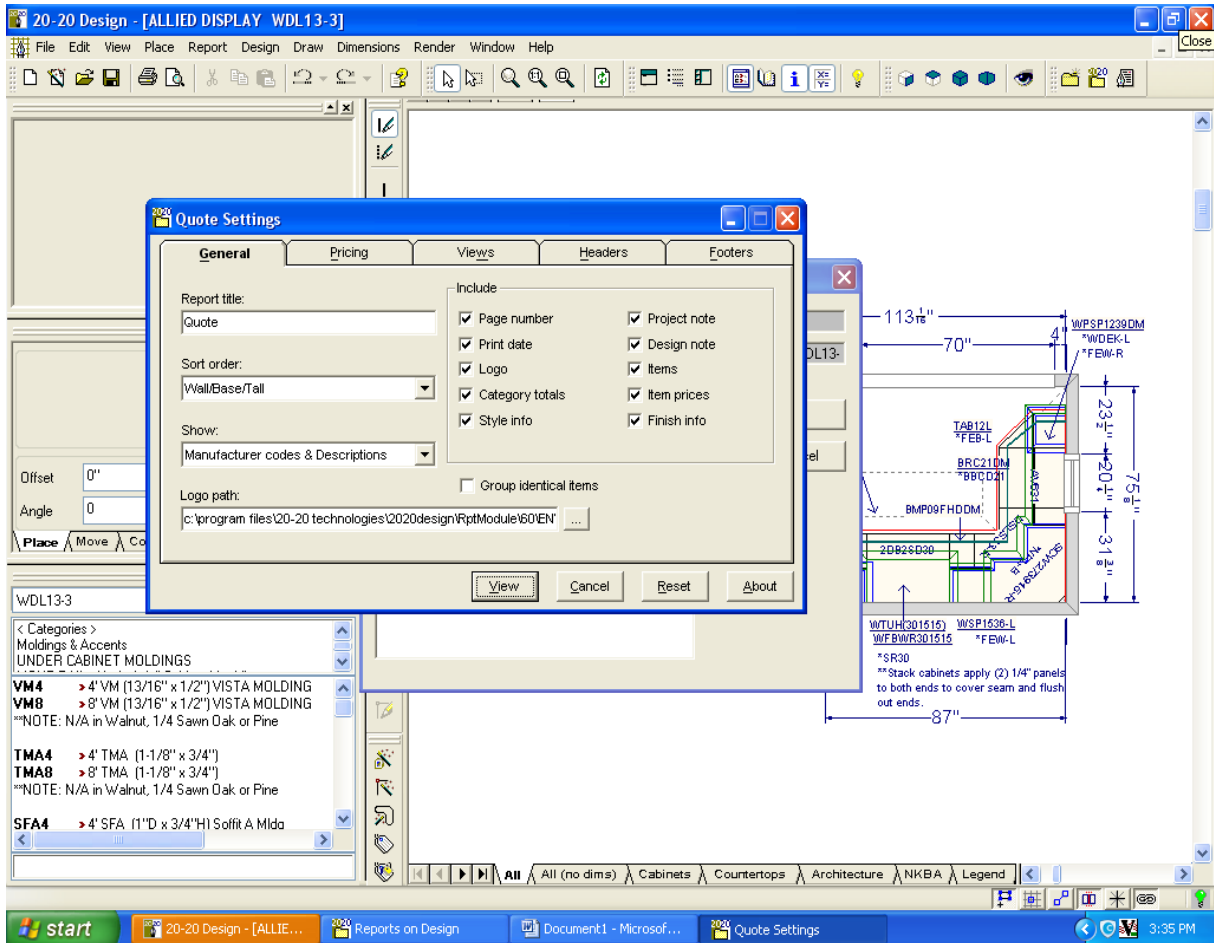
1. Fill out Order Cover Sheet
2. Print 20/20 report with Manufacturer Code and Descriptions. This will show ALL attachments and notes you placed in your quote.

### To print this report:

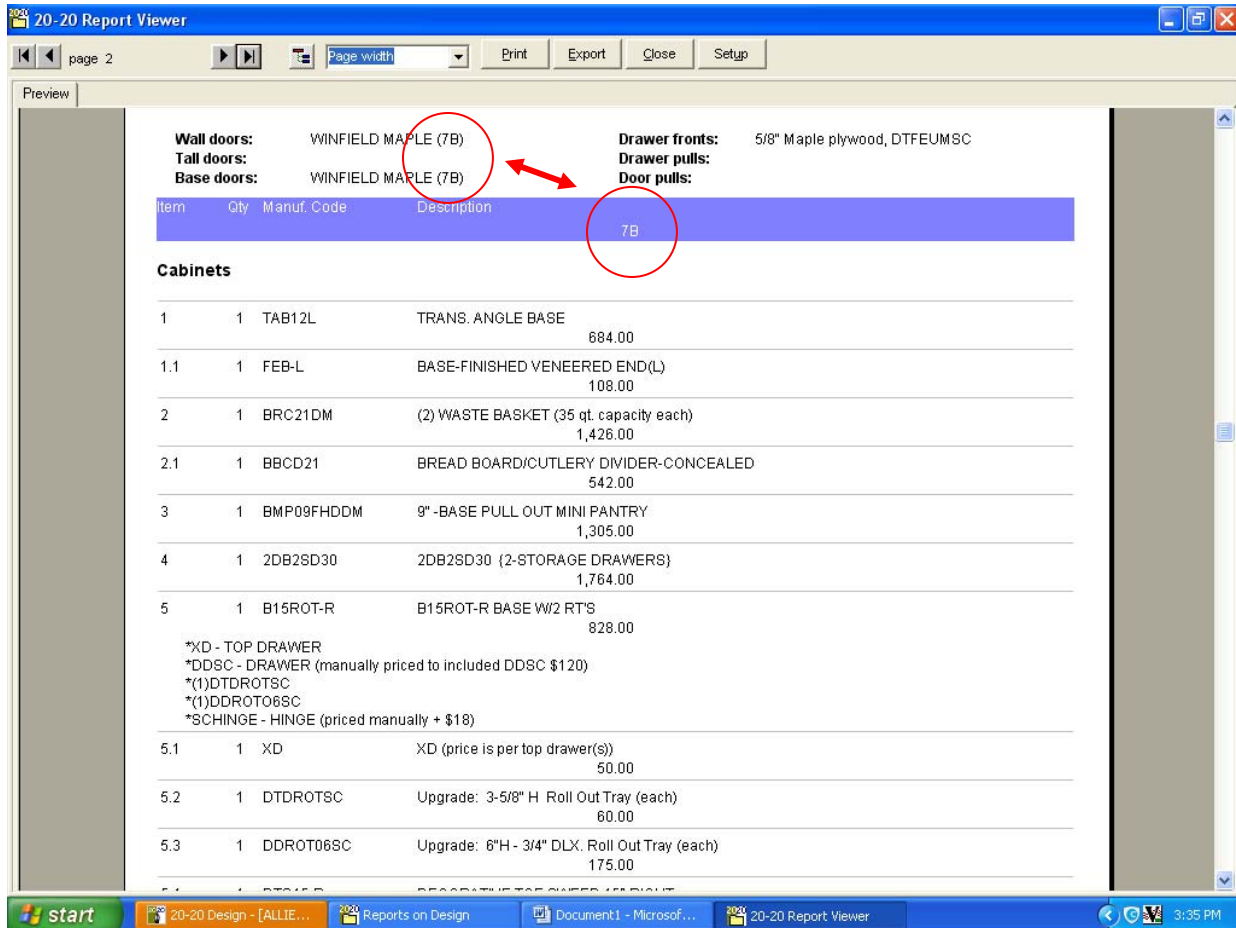
- a. Select **Quote** from your Reports on Design – (double click or click once and hit OK)



- b. **Sort Order:** Wall / Base / Tall (as shown)
- Show:** Manufacturer Code and Descriptions (as shown)



- c. Make sure that your *price column* (purple heading) matches the *price column* shown in your header from your door selection.



20-20 Report Viewer

page 2

Print Export Close Setup

Preview

Wall doors: WINFIELD MAPLE (7B)  
 Tall doors: WINFIELD MAPLE (7B)  
 Base doors: WINFIELD MAPLE (7B)

Drawer fronts: 5/8" Maple plywood, DTFEUMSC  
 Drawer pulls:  
 Door pulls:

Item	Qty	Manuf. Code	Description	Price
<b>Cabinets</b>				
1	1	TAB12L	TRANS. ANGLE BASE	684.00
1.1	1	FEB-L	BASE-FINISHED VENEERED END(L)	108.00
2	1	BRC21DM	(2) WASTE BASKET (35 qt. capacity each)	1,426.00
2.1	1	BBCD21	BREAD BOARD/CUTLERY DIVIDER-CONCEALED	542.00
3	1	BMP09FHDDM	9" -BASE PULL OUT MINI PANTRY	1,305.00
4	1	2DB2SD30	2DB2SD30 (2-STORAGE DRAWERS)	1,764.00
5	1	B15ROT-R	B15ROT-R BASE W/2 RT'S	828.00
*XD - TOP DRAWER				
*DDSC - DRAWER (manually priced to included DDSC \$120)				
*(1)DTDROTSC				
*(1)DDROT06SC				
*SCHINGE - HINGE (priced manually + \$18)				
5.1	1	XD	XD (price is per top drawer(s))	50.00
5.2	1	DTDROTSC	Upgrade: 3-5/8" H Roll Out Tray (each)	60.00
5.3	1	DDROT06SC	Upgrade: 6"H - 3/4" DLX. Roll Out Tray (each)	175.00

start | 20-20 Design - [ALLIE... | Reports on Design | Document1 - Microsof... | 20-20 Report Viewer | 3:35 PM