

# Door & Color Guide





Cabinets shown: IN PlusLine/Quartersawn White Oak/Café



## **The Woodland Way.**

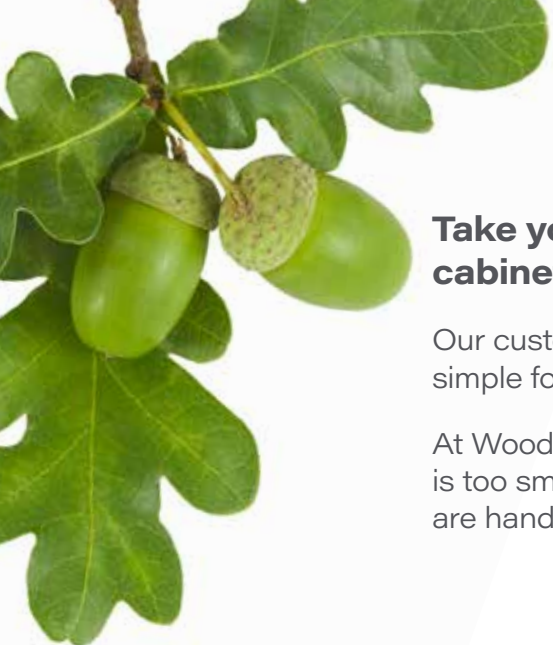
Our Core Values.

*Customer Experience, Quality,  
Commitment, Employee Owned, and  
Community Orientated*

**Woodland Cabinetry** is crafted from select hardwoods, handpicked veneers, or premium synthetic materials in the Artizen contemporary world. Our state of the art equipment guided by detailed craftsmen brings your dream kitchen to life.

Woodland Cabinetry offers one of the best finishes in the cabinet industry. Whether you desire our beautiful opaque enamel finish or a stained wood like our premium walnut and quartersawn white oak, Woodland Cabinetry always looks great and withstands the test of time.





## Take your project from dreams to reality with cabinetry that is uniquely yours.

Our custom cabinetry affords you a large variety of options, and we want to make it simple for you to find the styles that fit you best.

At Woodland, we know that the essence of quality is in the detail, and for us, no detail is too small. We custom build each cabinetry project upon order and all our finishes are hand applied to achieve the finest handcrafted look.



BRIDGEPORT S FO FA  
 (C)(A)(M)



CLASSIC FO SO FA IN  
 (C)(A)(M)



CONCORD S FO SO FA  
 (C)(A)(M)(O)



COPELAND S FO SO FA IN  
 (C)(A)(M)(O)



INGLEWOOD S FO SO FA IN  
 (C)(A)(M)



LIBERTY FO FA  
 (C)(A)(M)



MISSION S FO SO FA  
 (C)(A)(M)(W)(H)(O)(Q)



NEWPORT S FO SO FA  
 (C)(A)(M)(H)(O)



PAXTON S FO SO FA IN  
 (C)(A)(M)(W)(H)(O)(Q)



SLIMLINE SL S FO FA IN  
 HDF - Opaque Only



SOLITUDE S FO FA  
 HDF - Opaque Only



SPIRIT SL S FO FA  
 HDF - Opaque Only



SUMMIT S FO SO FA IN  
 (C)(A)(M)(W)(O)



TAYLOR S FO SO FA IN  
 (C)(A)(M)(W)

FO FULL OVERLAY   
 SO STANDARD OVERLAY   
 IN INSET   
 FA FULL ACCESS   
 5 5 PIECE DRAWER FRONT AVAILABLE

\* WOODLAND ONLY

\*\* ARTIZEN ONLY

Overlay refers to the amount of frame that is covered by the door and drawer front.  
 Reveal refers to the amount of visible face frame when the doors and drawers are closed.

C CHERRY   
 A ALDER   
 M MAPLE   
 W WALNUT   
 H HICKORY   
 O OAK   
 Q QUARTER SAWN WHITE OAK



CREEKSIDE 5 FO SO FA  
CAM



DELRAY 5 FO SO FA  
CAM



EASTON 5 FO SO FA IN  
CAMWHQ



FULTON 5 FO SO FA IN  
CAMHO



HILL 5 FO SO FA IN  
CAMWHOQ



PINNACLE 5 FO SO FA  
CAMHO



PLUSLINE 5 FO FA IN  
AMWOQ



PORTLAND 5 FO SO FA  
CAMHO



REFLECTION 5 FO FA  
 HDF - Opaque Only



SERENITY SL 5 FO FA IN  
 HDF - Opaque Only



TRINITY 5 FO FA IN  
 HDF - Opaque Only



WOODLINE 5 FO FA IN  
AMO



RAISED PANEL



ALBANY  
C(A)M



GALVESTON  
C(A)M(W)H(O)



HAMPTON  
C(A)M(H)O



HERITAGE  
C(A)M

PATINA COLLECTION  
WOODLAND ONLY



RUSTIC DAKOTA 5PC\*  
A(H)O



RUSTIC FARMSTEAD 5PC\*  
A(H)O



RUSTIC HOMESTEAD 5PC\*  
A(H)O

INSET  
WOODLAND ONLY



IN INGLEWOOD\*  
C(A)M



IN PAXTON\*  
C(A)M(O)Q



IN PLUSLINE\*  
A(M)Q(W)



IN SERENITY\*  
HDF - Opaque Only



IN SLIMLINE\*  
HDF - Opaque Only

SLAB



CASCADE\*  
C(A)M(W)H(O)Q



METRO HDF  
HDF - Opaque Only



FA CITI HG\*\*  
ECO Veneer



FA CITI VG\*\*  
ECO Veneer

Overlay refers to the amount of frame that is covered by the door and drawer front.  
 Reveal refers to the amount of visible face frame when the doors and drawers are closed.

Ⓢ CHERRY ⓐ ALDER Ⓜ MAPLE Ⓦ WALNUT Ⓜ HICKORY Ⓞ OAK Ⓞ QUARTER SAWN WHITE OAK



KENSINGTON  
 FO SO FA  
 Ⓢ ⓐ Ⓜ



MAYFIELD  
 Ⓢ FO SO FA  
 Ⓢ ⓐ Ⓜ Ⓜ Ⓞ



WATERFORD  
 Ⓢ FO SO FA  
 Ⓢ ⓐ Ⓜ Ⓦ Ⓜ



WINDSOR  
 Ⓢ FO SO FA  
 Ⓢ ⓐ Ⓜ Ⓜ Ⓞ



WINDSOR ARCH\*  
 FO SO  
 Ⓢ ⓐ Ⓜ Ⓜ Ⓞ



IN CLASSIC\*  
 Ⓢ ⓐ Ⓜ



IN EASTON\*  
 Ⓢ ⓐ Ⓜ Ⓞ



IN FULTON\*  
 Ⓢ ⓐ Ⓜ



IN GALVESTON\*  
 Ⓢ ⓐ Ⓜ Ⓦ



IN HILL\*  
 Ⓢ ⓐ Ⓜ Ⓦ Ⓞ Ⓞ



IN SUMMIT\*  
 Ⓢ ⓐ Ⓜ Ⓦ Ⓞ



IN TAYLOR\*  
 Ⓢ ⓐ Ⓜ Ⓦ



IN TRINITY\*  
 Ⓢ

HDF - Opaque Only



IN WOODLINE\*  
 Ⓢ ⓐ Ⓜ Ⓞ



FA LOFT HG\*\*  
 FA  
 TSS



FA LOFT VG\*\*  
 FA  
 TSS



FA ULTRA\*\*  
 FA  
 Lacquer



FA UPTOWN HG/VG\*\*  
 FA  
 TFL Copper



FA URBAN\*\*  
 FA  
 Matte Melamine

**Natural wood characteristics.** The uniqueness of wood is its variation in color and grain pattern. Just as no two trees are alike, no two pieces of wood are alike. Light stains will exhibit greater variation in color due to the underlying wood tones, than darker stains.

<p><b>RECLAIMED PATINA WOODLAND ONLY</b></p>						
	HICKORY	OAK	ALDER			
<p><b>RECLAIMED PATINA COLORS HICKORY</b></p>						
				<p>OAK</p> 		
CRIMSON	STONE	FERN	SMOKE	CRIMSON	STONE	FERN
<p><b>WALNUT</b></p>						
NATURAL	CAFE	CHAI	SPICE	SIENNA	WEATHERED	
<p><b>QUARTER SAWN WHITE OAK</b></p>						
NATURAL	WINTER	BISCOTTI	CAFE	CHAI	LATTE	
						
WEATHERED/EBONY	PEWTER/EBONY					
<p><b>CHERRY</b></p>						
NATURAL	CAFE	CHAI	JAVA	LATTE	FAWN	
						
PEWTER	CHARCOAL	NATURAL/CHOCOLATE	SPICE /EBONY	SIENNA/EBONY	CHILI /EBONY	MINERAL/EBONY
<p><b>ALDER</b></p>						
NATURAL	WINTER	CAFE	CHAI	JAVA	FAWN	
						
MINERAL	PEWTER	MIDNIGHT	CHARCOAL	NATURAL/CHOCOLATE	FAWN/EBONY	SADDLE /EBONY
<p><b>MAPLE</b></p>						
NATURAL	WINTER	CAFÉ	CIDER	NUTMEG	MOCHA	





ALDER



SMOKE



COTTAGE WHITE



COTTAGE LACE



CRIMSON



STONE



FERN



SMOKE



MINERAL



PEWTER



FAWN



SADDLE



MINERAL



WEATHERED



PEWTER



CHARCOAL



FAWN/EBONY



SADDLE



SPICE



CIDER



SIENNA



MOCHA



CHILI



MINERAL



SADDLE



SPICE



NUTMEG



SIENNA



MOCHA



CHILI



WEATHERED



SPICE/EBONY



NUTMEG/CHOCOLATE



MOCHA/EBONY



CHILI/EBONY



WEATHERED/EBONY



PEWTER



MIDNIGHT

**HICKORY**



NATURAL



WINTER



BISCOTTI



CAFE



CHAI



LATTE



WEATHERED



MINERAL



PEWTER



NATURAL/CHOCOLATE



FAWN/EBONY



SPICE/EBONY



MOCHA/CHOCOLATE

**OAK**



NATURAL



WINTER



CAFE



CHAI



LATTE



JAVA



MINERAL



PEWTER



CHARCOAL



MIDNIGHT

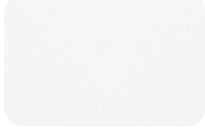


MOCHA/CHOCOLATE

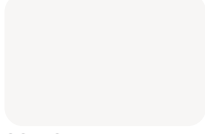


MINERAL/EBONY

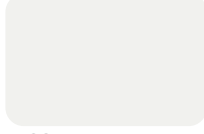
**OPAQUE ENAMEL**



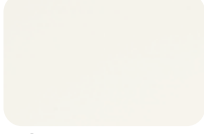
WHITE



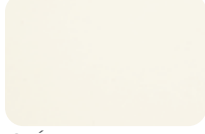
COTTON



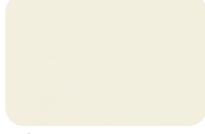
FROST



LACE



CRÈME



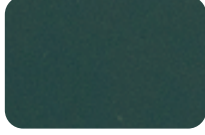
IVORY



TRUFFLE



HAVEN



FOREST



PACIFIC



CALYPSO



CADET

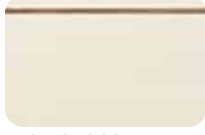


STEEL

**OPAQUE ENAMEL WITH GLAZE**



WHITE/FEATHER GRAPHITE



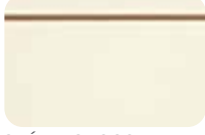
LACE/CHOCOLATE



LACE/GRAPHITE



LACE/FEATHER GRAPHITE



CRÈME/CHOCOLATE



CRÈME/GRAPHITE

**ECO VENEER FA CITI ARTIZEN ONLY**



NATURAL WHITE OAK



NATURAL CHERRY



SPICE WALNUT



SIENNA WALNUT



MINERAL WALNUT



PEWTER WALNUT

**WOODGRAIN**

**TSS FA LOFT ARTIZEN ONLY**



\*SHELL LK84



\*NADIR LN67



\*COASTAL LN27



\*NANTUCKET LM69



\*BROLIO OAK LR09



\*NERO U129



GAVI OAK LN66



ASPEN OAK LM67



GREYSTONE SO15



CARBONE LM08



TOASTED ESPRESSO S071



MADRID S133



CYPRESS POINT SO13

\* In Stock



JAVA



FAWN



SADDLE



SPICE



NUTMEG



SIENNA



MOCHA



WEATHERED/EBONY



MINERAL/EBONY



PEWTER/EBONY



FAWN



SADDLE



SPICE



NUTMEG



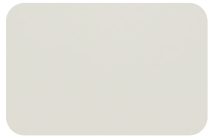
SIENNA



MOCHA



WEATHERED



CONCRETE



SILVER BAY



KHAKI



DOVE



INLAND



RIVER ROCK



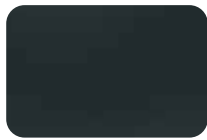
FORGE



HARBOR



NAVY



ONYX



BLACK



CRÉME/FEATHER GRAPHITE



BIANCO B011



SILVER SAND S011



CAIRO S138



DUBLIN S135



VINEYARD OAK LN30



ASCARI LR25



VOLTERRA OAK S095

LEATHER



NEBIA UB19

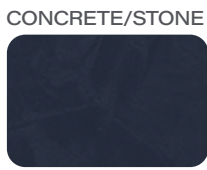
METALLIC



OTTONE FB86



MAYA BRONZE FA33



NIGHT UB02

CONCRETE/STONE

**TFL**  
**FA UPTOWN**  
 ARTIZEN ONLY



\*PLATINUM



\*COPPER

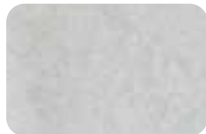


\*BRASS



\*NICKEL

**MATTE**  
**MELAMINE**  
**FA URBAN**  
 ARTIZEN ONLY

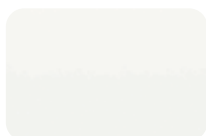


\*PLATINO S60MATT

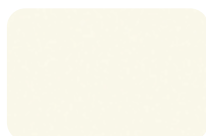


\*COBALTO S63MATT

**MATTE**  
**LACQUER**  
**FA ULTRA**  
 ARTIZEN ONLY



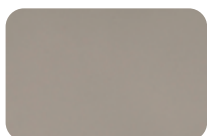
BLANCO Z19MATT



MAGNOLIA Z08MATT



CASHMERE Z55MATT



BASALTO Z38MATT

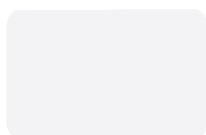


ANTRACITA Z11MATT

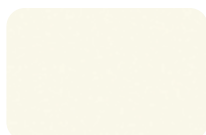


BLACK Z10MATT

**HIGH GLOSS**  
**LACQUER**  
**FA ULTRA**  
 ARTIZEN ONLY



\*POLAR 667GLOSS



MAGNOLIA 608GLOSS



CASHMERE 655GLOSS



PALE GREY 650GLOSS



ANTRACITA 611GLOSS



BLACK 610GLOSS

*\* In Stock*

The colors shown in the brochure are as close a representation as printing allows.  
 Woodland recommends you make selections only after viewing an actual sample.



2415 SD HIGHWAY 10 ~ SISSETON, SOUTH DAKOTA 57262  
**WOODLANDCABINETRY.COM**

EMPLOYEE OWNED  AMERICAN MADE

4-2023